

## RV907M

V1.0

Jan 2018

### 1. Feature



- 1) Single card can output 16 groups RGBR' data;
- 2) Single card can output 20 groups RGB data;
- 3) Single card can output 24 groups RGB data;
- 4) Single card can output 32 groups serial data;
- 5) Single card maximum supports 1024X256 pixels ( **Please note that there are recommended values depending on the design of LED screen** );
- 6) Each interface has VCC pin to get power supply for control system from led module, no need to get extra power supply for control system;
- 7) Support pixel-by-pixel brightness calibration; single-card color space conversion;
- 8) Support network cable BER test;

Official website: [www.linsn.com](http://www.linsn.com)

Add: Floor 15&16, Jiajiahao Business Building, No. 10168, Shennan Blvd,

Nanshan District, Shenzhen

Tel: +86-0755-33985098

- 9) High refresh rate and high grey level with most of the driver ICs;
- 10) In line with EU standards RoHS;
- 11) In line with EU standards CE-EMC class B;

## 2. Pinout for RV907M

### 1) Normal mode (default mode)

Support full-color screen, virtual full-color screen and double-color display, there are 16 groups RGBR' data

In normal mode, 26pin is defined as follow.

A	1	2	B
OE	3	4	LAT
CLK	5	6	VCC
C	7	8	D
R1	9	10	G1
R1'	11	12	U1
GND	13	14	R2
G2	15	16	R2'
U2	17	18	R3
G3	19	20	GND
R3'	21	22	U3
R4	23	24	G4
R4'	25	26	U4

2)20-group data mode (Select 20 data for RV907 in card mode option in LedSet/LEDStudioV12.60 or earlier)

Only for full color screen, each interface has 5 groups of data.

The 26PIN defined as follow

A	1	2	B
OE	3	4	LAT
CLK	5	6	VCC
C	7	8	D
E	9	10	R1
G1	11	12	U1
GND	13	14	R2
G2	15	16	U2
R3	17	18	G3
U3	19	20	GND
R4	21	22	G4
U4	23	24	R5
G5	25	26	U5

3) 24 groups data mode (Select 24 data for RV907 in card mode option in LedSet/LEDStudioV12.60 or earlier)

Only for full color screen, 4 scan mode or up needs serial decodes or switching triode with serial decoding. As for serial decoding circuit, please see Appendix. 26Pin is defined as follow, and each interface has 6 groups data

A	1	2	B
OE	3	4	LAT
CLK	5	6	VCC
R1	7	8	G1
U1	9	10	R2
G2	11	12	U2
GND	13	14	R3
G3	15	16	U3

Official website: [www.linsn.com](http://www.linsn.com)

Add: Floor 15&16, Jiajiahao Business Building, No. 10168, Shennan Blvd,  
Nanshan District, Shenzhen  
Tel: +86-0755-33985098

R4	17	18	G4
U4	19	20	GND
R5	21	22	G5
U5	23	24	R6
G6	25	26	U6

#### 4) 16 groups or 64 groups serial data mode

Support full-color screen, virtual full-color screen and double-color screen.

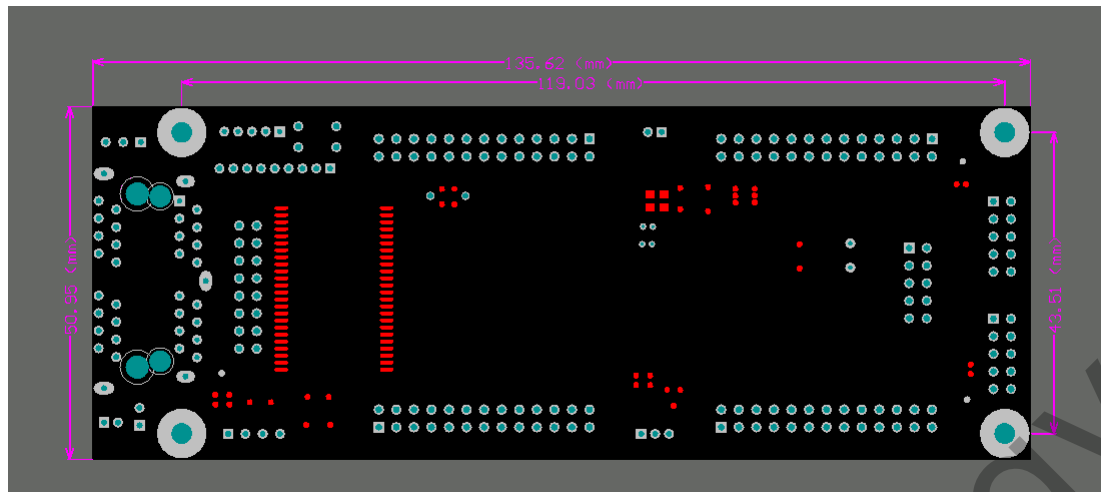
Only interface-1 output the valid data with 16-group mode; all the interfaces output valid data with 64-group mode

A	1	2	B
OE	3	4	LAT
CLK	5	6	VCC
C	7	8	D
R1	9	10	R2
R3	11	12	R4
GND	13	14	R5
R6	15	16	R7
R8	17	18	R9
R10	19	20	GND
R11	21	22	R12
R13	23	24	R14
R15	25	26	R16

### 3.Dimensions

Official website: [www.linsn.com](http://www.linsn.com)

Add: Floor 15&16, Jiajiahao Business Building, No. 10168, Shennan Blvd,  
Nanshan District, Shenzhen  
Tel: +86-0755-33985098



#### 4. Model table

**RV907M and RV927M are in stock. RV917M and RV937M need make to order.**

Model	RJ45 Direction	output interface type
RV907M	90°	interface in front side
RV917M	180°	interface in front side
RV927M	90°	interface at the back side
RV937M	180°	interface at the back side

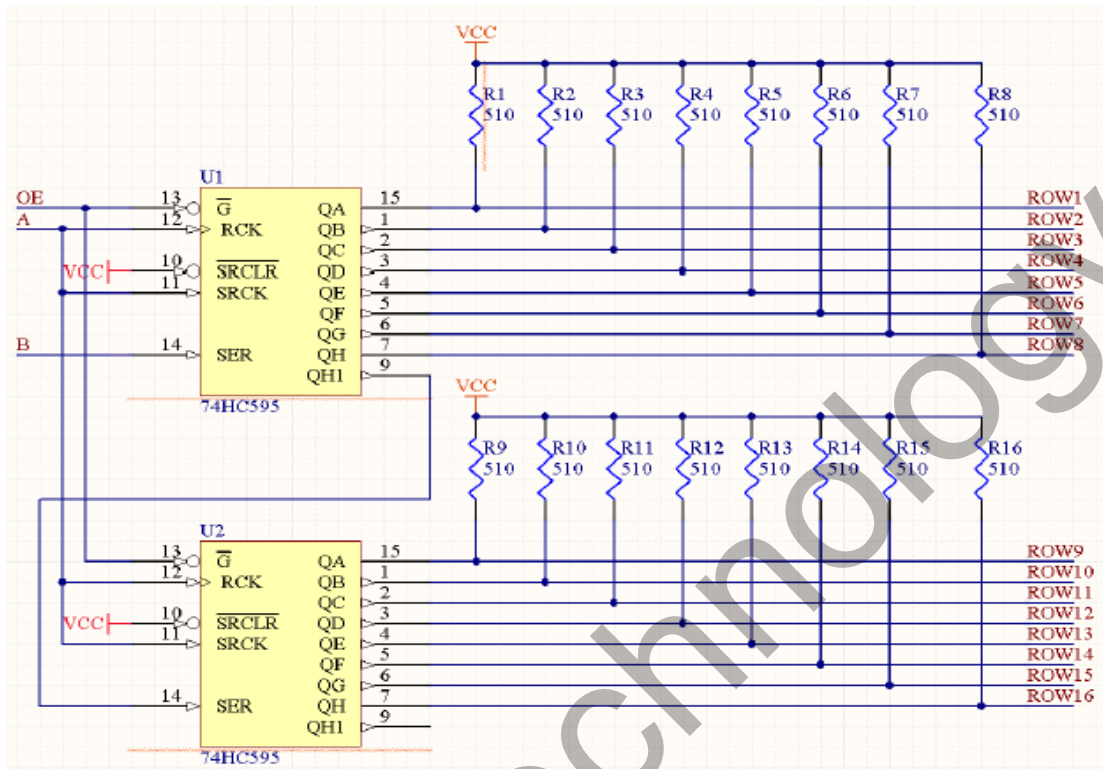
#### 4. Working conditions

Rated voltage (V)	5	maximum	5.5	minimum	4.5
Rated current (A)	0.80	maximum	0.87	minimum	0.73
Rated power consumption(W)	4.0	maximum	4.8	minimum	3.3
Working temperature (°C)	-20°C ~ 75°C				
Working humidity (%)	0% ~ 95%				

Official website: [www.linsn.com](http://www.linsn.com)

Add: Floor 15&16, Jiajiahao Business Building, No. 10168, Shennan Blvd,  
Nanshan District, Shenzhen  
Tel: +86-0755-33985098

## Appendix1.Serial circuit



END