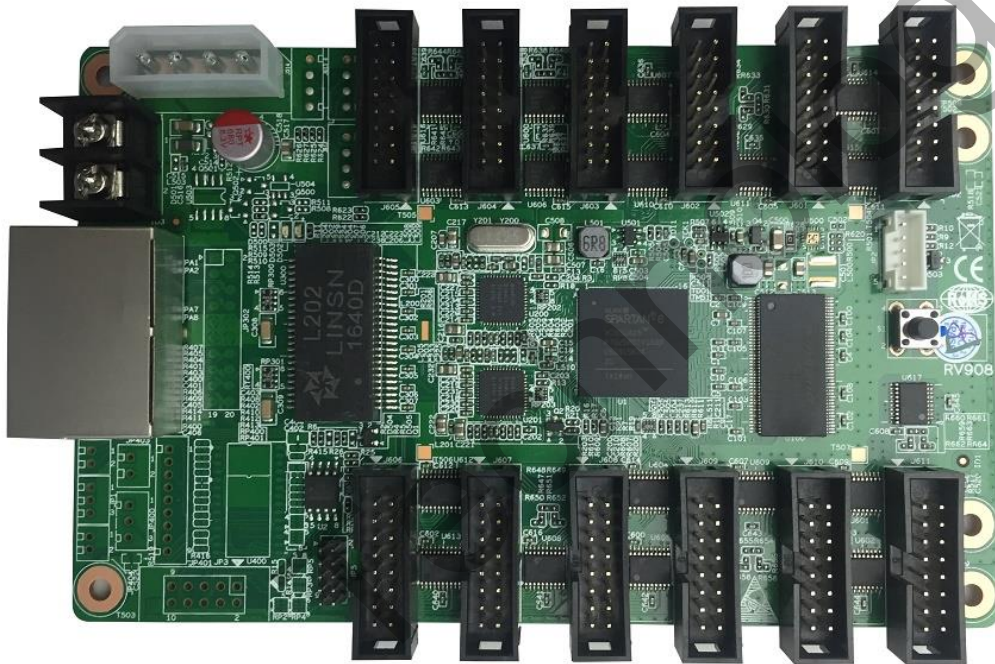


Receiver

RV908M32

V1.0
Jan 2018

1.Function



RV908M32 is built for the standardization manufacturer, integrated with hub card whose size is the same as RV901 and it is compatible with RV901. The function of RV908M32 is similar to the one of RV901 plus a hub75 card, but RV908M32 supports up to 32 scan mode.

- 1) 12 hub75 interface on board(supports 32 scan mode), no extra hub card needed;
- 2) Supports 12-bit HDMI colors input (required the 9th generation sending card);
- 3) Using 18-bit signal processor, maximum support 18-bit (260,000) gray (each of red, green and blue);
- 4) Single card maximum support 1024×768 pixels (**Please note that there are recommended values depending on the design of LED screen**);
- 5) Single card can output 24 groups RGB data;
- 6) Supports 138 decode, 595 serial decode and so on.
- 7) Supports pixel-by-pixel brightness and color calibration; single-card color space conversion;
- 8) High refresh rate and high grey level with most of the driver ICs;
- 9) Supports general driver ICs and most of the PWM driver ICs
- 10) Support hot backup with dual receiver cards for demanding performances screen;
- 11) Support network cable BER test;
- 12) In line with RoHS standards;
- 13) In line with EU standards CE-EMC class B;

Compared with RV908T/RV908H, RV908M is with E signal
which can supports up to 32 scan mode

2.RV908M32 PINOUT

Receiving card get 12 outputs only when it is under 24-set-data-group working mode. Each interface output data is as following:

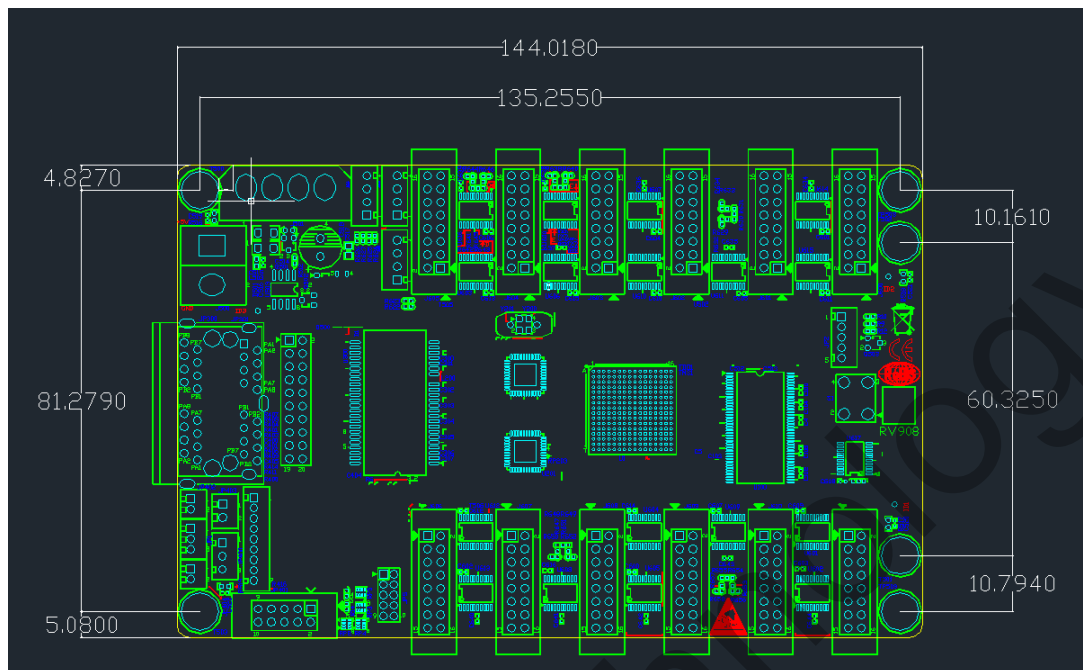
R1	1	2	G1
B1	3	4	GND
R2	5	6	G2
B2	7	8	E
A	9	10	B
C	11	12	D
CLK	13	14	LAT
OE	15	16	GND

3. Model table

RV908 is in stock. RV918 need make to order.

Model	RJ45 Direction	output interface type
RV908	90 Degree	interface in front side
RV918	180 Degree	interface in front side

4. Dimension and position of the installation holes



5. Working conditions

Rated voltage (V)	5	maximum value	5.5	Minimum value	4.5
Rated current (A)	0.80	maximum value	0.87	Minimum value	0.73
Rated power consumption (W)	4.0	maximum value	4.8	Minimum value	3.3
Working temperature (°C)	-20°C ~ 75°C				
Working humidity (%)	0% ~ 95%				

END