

RV908 series Multiple Division Solution Instruction

Double Division

It means that only half height output of receiving card is used, and the rest is used as the width output.

- Function:**
1. The LED refresh rate will be doubled.
 2. The loading width will be increased with no change on original refresh rate.

The models of receiving card: RV908H , RV908T , RV908M , RV908N. The connection is shown in the diagram below .

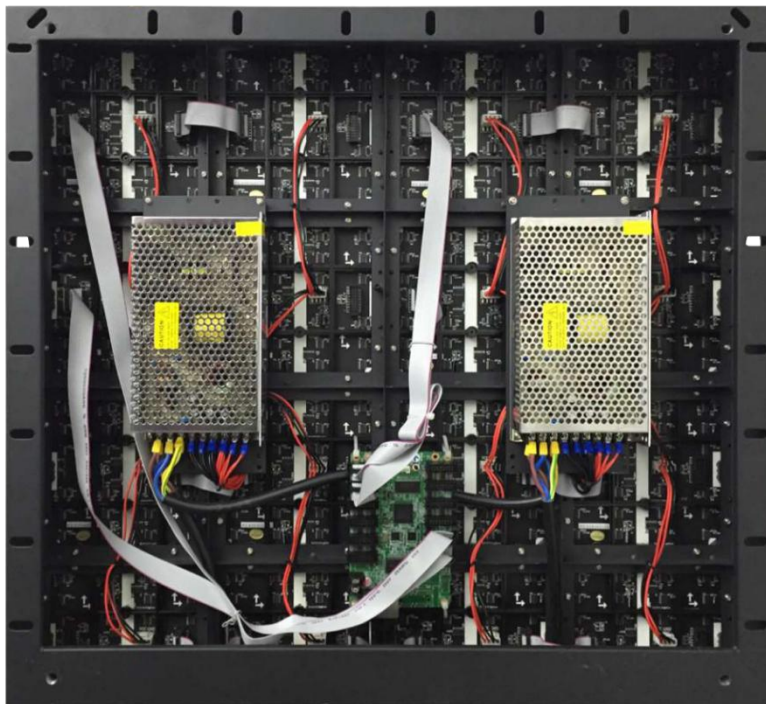
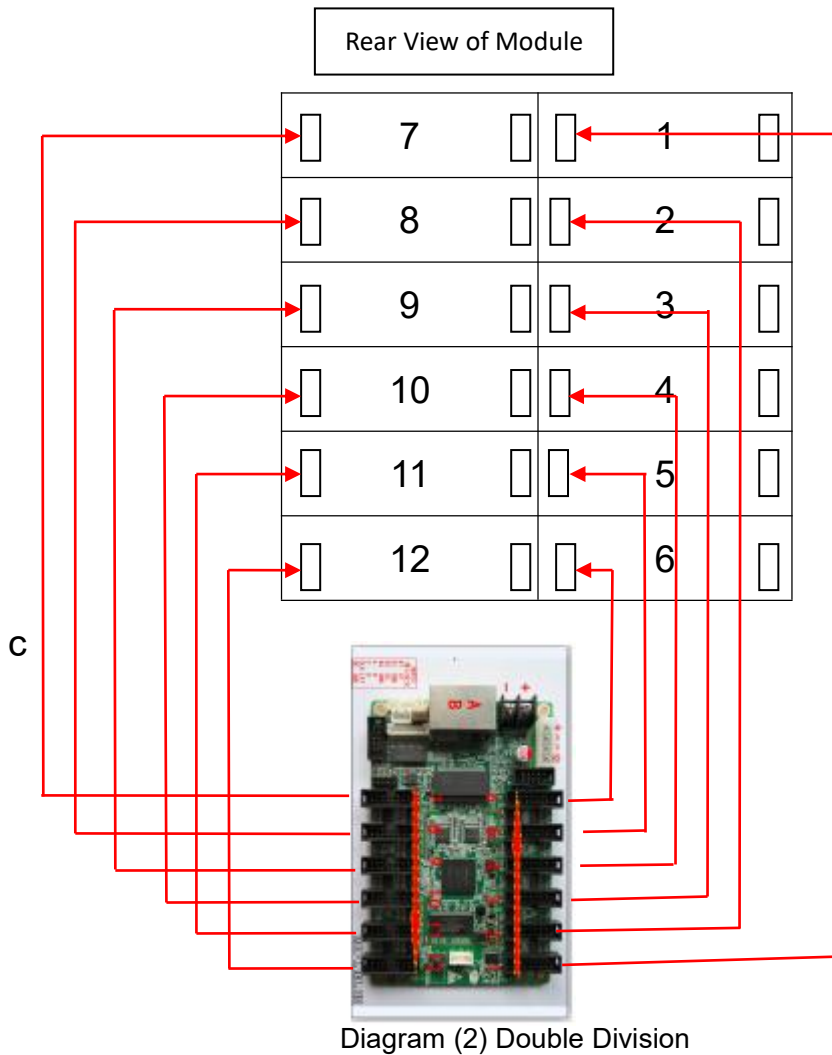


Diagram (1) Double Division

LINSN TECHNOLOGY



Division by 3

It means that only one-third height output of the receiving card is used, and the rest is used as the width output.

Function: 1. The LED refresh rate will be tripled.

2. The loaded width will be increased with no change on original refresh rate.

The models of receiving card: RV908H, RV908T, RV908M, RV908N. The connection is shown in the diagram below.

LINSN TECHNOLOGY

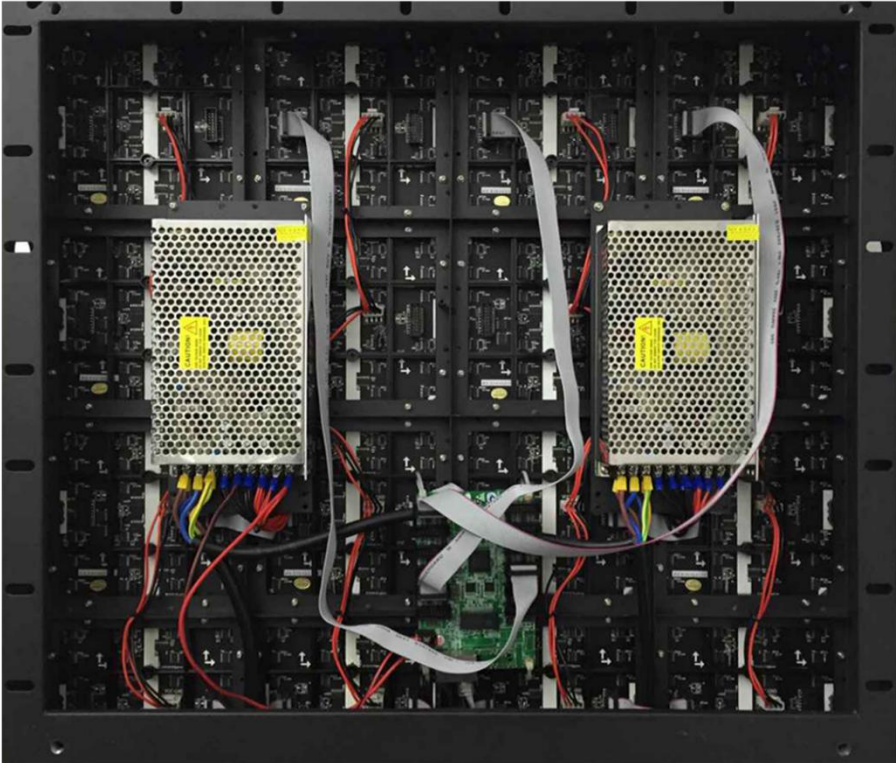


Diagram (3) Division by 3

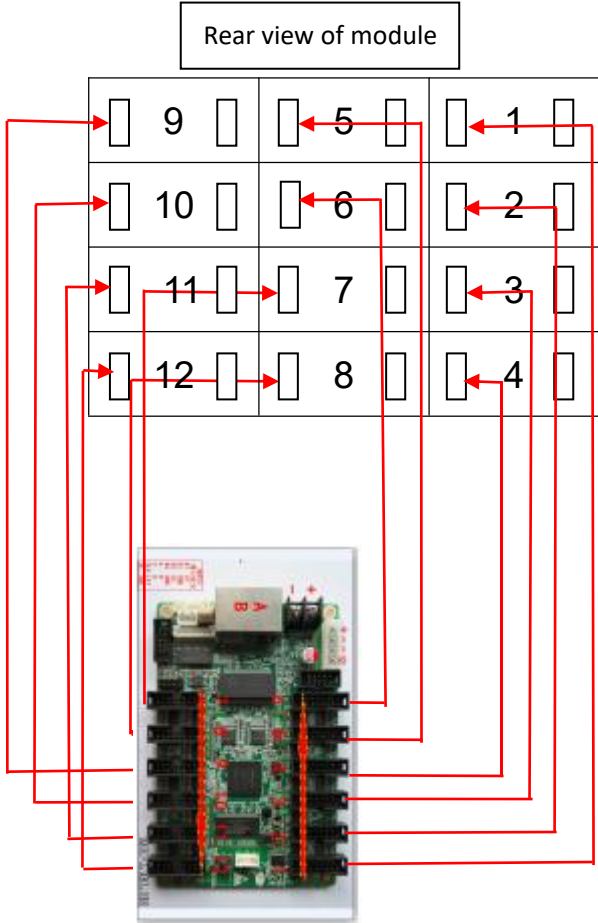


Diagram (4) Division by 3

Division by 4

It means that only one-fourth height output of the receiving card is used, and the rest is used as the width output.

Function:

1. The LED refresh rate will be quadrupled.
2. The loaded width will be increased with no change on original refresh rate.

The models of receiving card: RV908H, RV908T, RV908M, RV908N. The connection is shown in the diagram below.

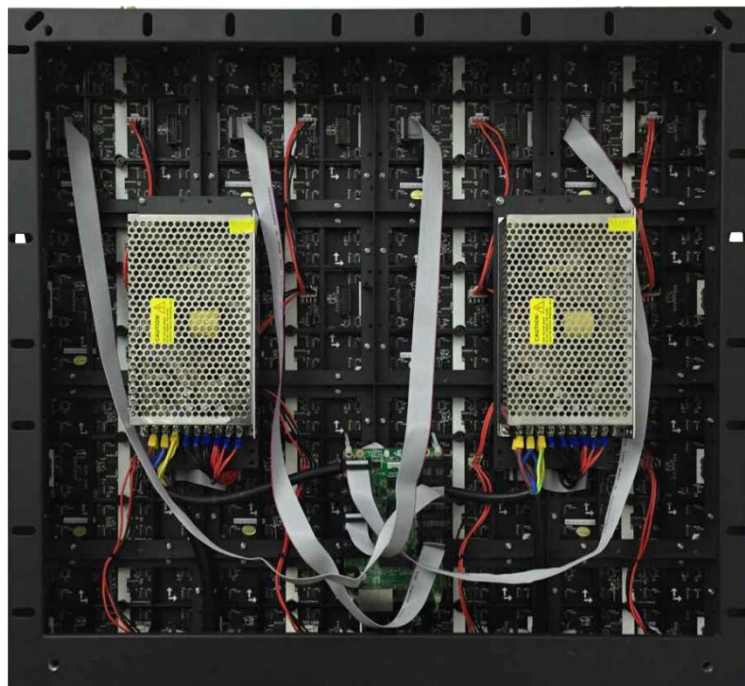


Diagram (5) Division by 4

LINSN TECHNOLOGY

Rear view of module

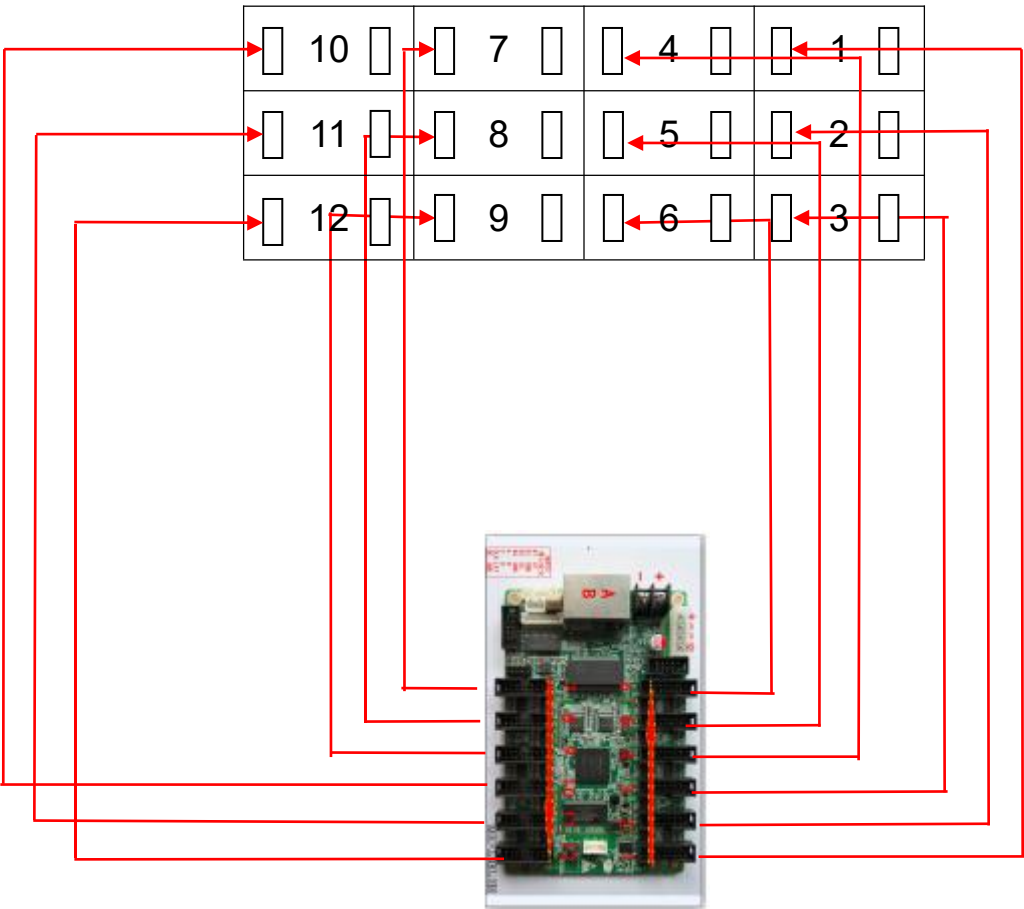


Diagram (6) Division by 4