

Receiver Card

Mini901GV4

V 1.0
Jan 2018

1. Features

Mini901GV4 is a high-end and full-featured ultra-small size mini receiver card. Compared with traditional receiver card, Mini901 GV4 uses DDR SODimm200 Interface. It is more flexible and it adapts to a variety of electronic circuit structure, achieving a card suitable for all applications. For this DDR interface we can provide docking development template for reference, which will considerably reduce the types of purchasing receiver card.

The system, specific circuits and program design of Mini901GV4, can effectively reduce the electromagnetic radiation and effectively help products pass the EMC test easily. Specific features are as follows:

1. It has all functions of 8th and 9th generation receiver cards and it is completely compatible with them.

Official website: www.linsn.com
Add: Floor 15&16, Jiajiahao Business Building, No. 10168, Shennan Blvd,
Nanshan District, Shenzhen
Tel: +86-0755-33985098

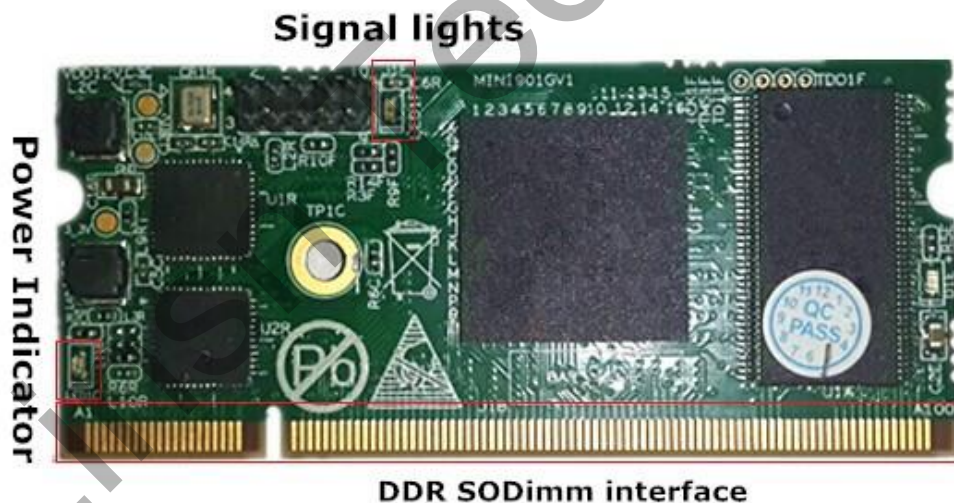
2. Single card can support 32 groups RGB data output.
3. Supporting high refresh and high gray level.
4. Supporting general driver IC and PWM IC.
5. Supporting any type of scan within 32 scan, and supporting 595 and other serial decoding scan.
6. Support pixel-by-pixel brightness and color calibration.
7. Single card maximum supports 1024X256 pixels.
8. Supporting 12-bit HDMI colors input (required the 9th generation sending card).
9. Using 18-bit signal processor, maximum supporting 18-bit (260,000) gray (each of red, green and blue).
10. Supporting single-card color space conversion
11. Supporting configuration file read back.
12. Supporting pixel fault detection (requires a dedicated chip).
13. Supporting network cable BER test.
14. Supporting flat cable fault detection.
15. Supporting hot backup with dual receiver cards, dual power supplier, etc.
16. Module Flash chip can store calibration data.

Official website: www.linsn.com

Add: Floor 15&16, Jiajiahao Business Building, No. 10168, Shennan Blvd,
Nanshan District, Shenzhen
Tel: +86-0755-33985098

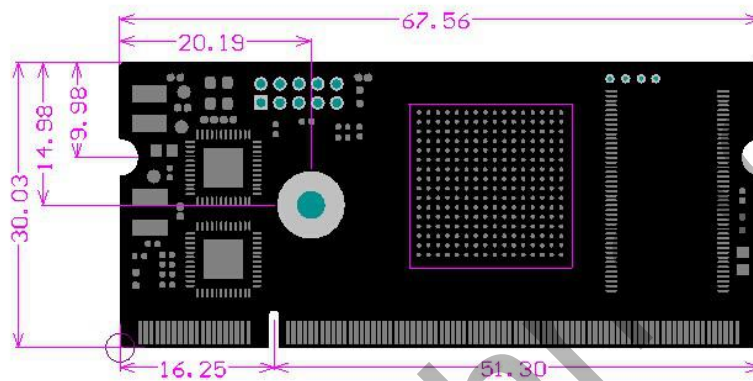
17. Supporting temperature and humidity monitoring.
18. Supporting smoke monitoring.
19. Supporting voltage monitoring.
20. Supporting the cabinet-door (open/close) monitoring and fan speed monitoring.
21. Supporting the LCD panel display module.
22. In line with EU standards RoHS
23. In line with EU standards CE-EMC;

2. Appearance Introduction



Picture 1 Mini901 Picture

3. Dimensions



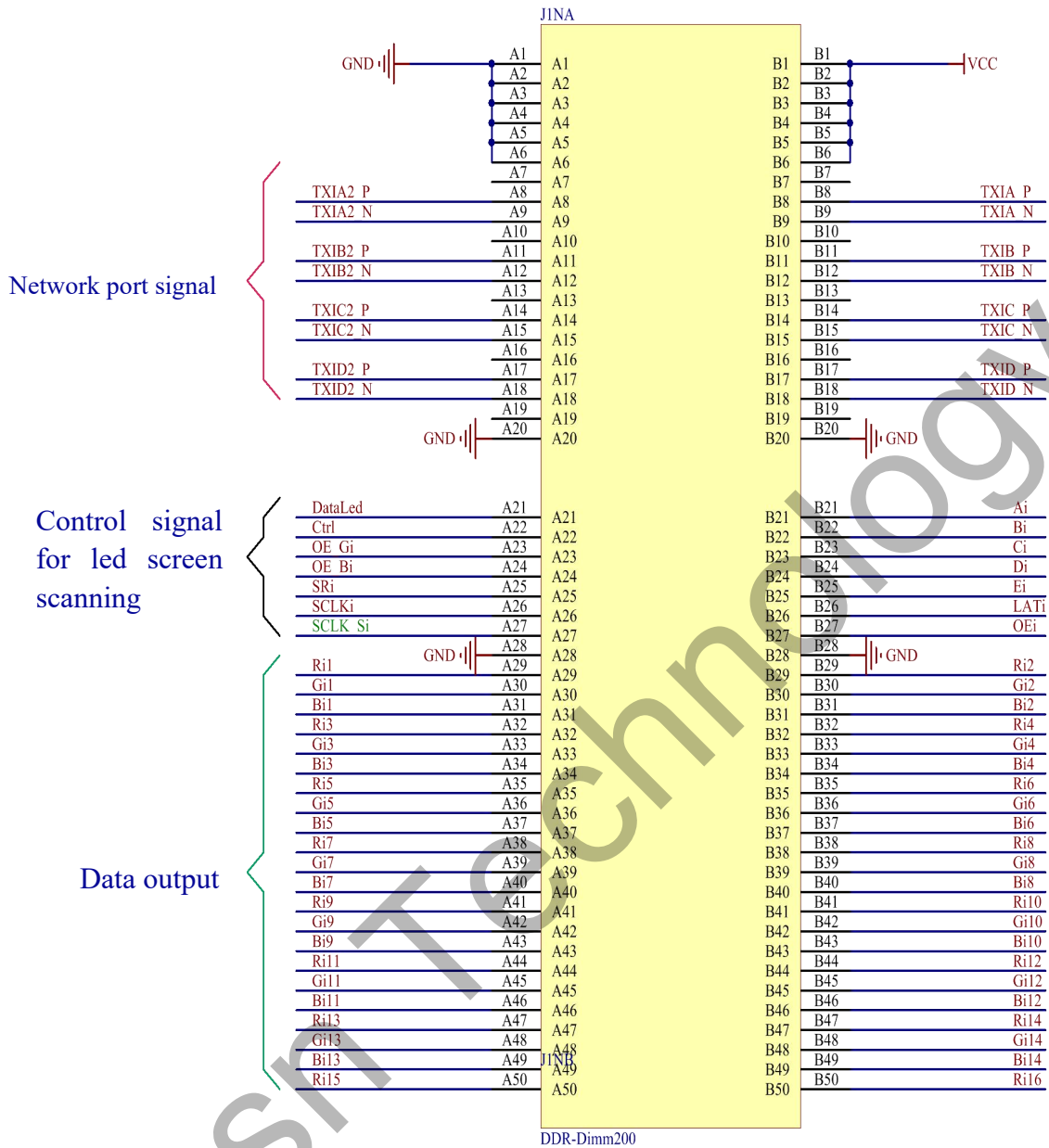
Picture 2 Mini901 Hole dimension drawings (mm)

4. Pin Description

Official website: www.linsn.com

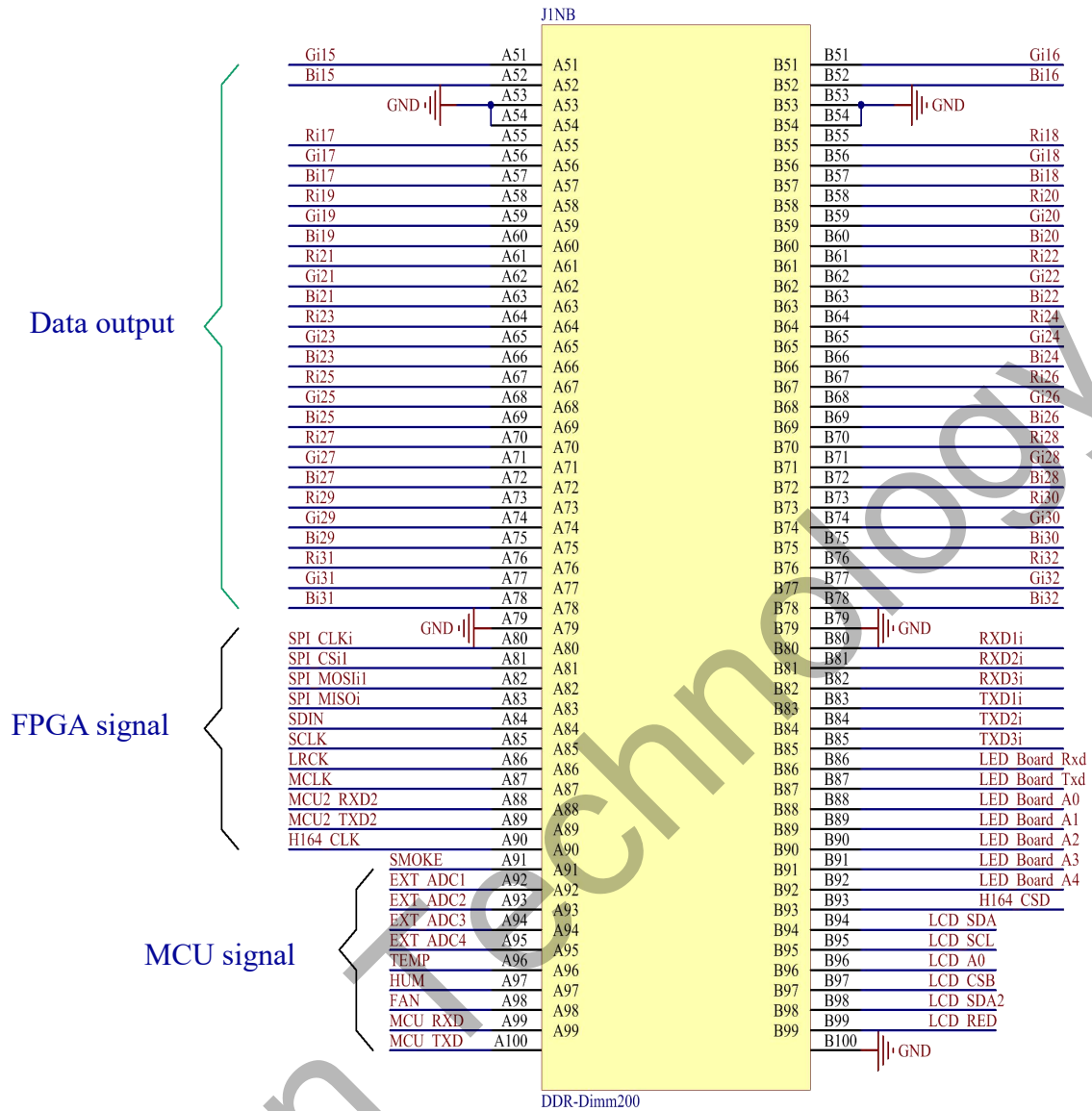
Add: Floor 15&16, Jiajahao Business Building, No. 10168, Shennan Blvd,
Nanshan District, Shenzhen

Tel: +86-0755-33985098



Official website: www.linsn.com

Add: Floor 15&16, Jiayahao Business Building, No. 10168, Shennan Blvd,
Nanshan District, Shenzhen
Tel: +86-0755-33985098



Picture3 DDR SODimm200 interface

Definition Description: The following comments table of pin definitions correspond with the pins map above (from top to down).

	GND	A1	B1	VCC	
	GND	A2	B2	VCC	
	GND	A3	B3	VCC	
	GND	A4	B4	VCC	
	GND	A5	B5	VCC	
	GND	A6	B6	VCC	
Net interface module one	Reserved	A7	B7	Reserved	Net interface module two
	TXIA2_P (orange)	A8	B8	TXIA_P (orange)	
	TXIA2_N (White and Orange)	A9	B9	TXIA_N (White and Orange)	
	Reserved	A10	B10	Reserved	
	TXIB2_P (green)	A11	B11	TXIB_P (green)	
	TXIB2_N (white and green)	A12	B12	TXIB_N (white and green)	
	Reserved	A13	B13	Reserved	
	TXIC2_P (blue)	A14	B14	TXIC_P (blue)	
	TXIC2_N (white and blue)	A15	B15	TXIC_N (white and blue)	
	Reserved	A16	B16	Reserved	
	TXID2_P (brown)	A17	B17	TXID_P (brown)	
	TXID2_N (white and brown)	A18	B18	TXID_N (white and brown)	
Reserved	A19	B19	Reserved		
	GND	A20	B20	GND	
Self-Test	DataLed	A21	B21	Ai	Scan control signal
	Ctrl	A22	B22	Bi	
	OE Gi	A23	B23	Ci	
	OE Bi	A24	B24	Di	
	SRi	A25	B25	Ei	
Data Clock	SCLKi	A26	B26	LATi	
Extended Clock	SCLK Si	A27	B27	O Ei	
Data signal	GND	A28	B28	GND	
	Ri1	A29	B29	Ri2	
	Gi1	A30	B30	Gi2	
	Bi1	A31	B31	Bi2	
	Ri3	A32	B32	Ri4	

Official website: www.linsn.com

Add: Floor 15&16, Jiajiahao Business Building, No. 10168, Shennan Blvd,
Nanshan District, Shenzhen
Tel: +86-0755-33985098

output module	Gi3	A33	B33	Gi4	
	Bi3	A34	B34	Bi4	
	Ri5	A35	B35	Ri6	
	Gi5	A36	B36	Gi6	
	Bi5	A37	B37	Bi6	
	Ri7	A38	B38	Ri8	
	Gi7	A39	B39	Gi8	
	Bi7	A40	B40	Bi8	
	Ri9	A41	B41	Ri10	
	Gi9	A42	B42	Gi10	
	Bi9	A43	B43	Bi10	
	Ri11	A44	B44	Ri12	
	Gi11	A45	B45	Gi12	
	Bi11	A46	B46	Bi12	
	Ri13	A47	B47	Ri14	
	Gi13	A48	B48	Gi14	
	Bi13	A49	B49	Bi14	
	Ri15	A50	B50	Ri16	
	Gi15	A51	B51	Gi16	
	Bi15	A52	B52	Bi16	
	GND	A53	B53	GND	
	GND	A54	B54	GND	
	Ri17	A55	B55	Ri18	
	Gi17	A56	B56	Gi18	
	Bi17	A57	B57	Bi18	
	Ri19	A58	B58	Ri20	
	Gi19	A59	B59	Gi20	
	Bi19	A60	B60	Bi20	
	Ri21	A61	B61	Ri22	
	Gi21	A62	B62	Gi22	
Bi21	A63	B63	Bi22		
Ri23	A64	B64	Ri24		
Gi23	A65	B65	Gi24		
Bi23	A66	B66	Bi24		
Ri25	A67	B67	Ri26		
Gi25	A68	B68	Gi26		
Bi25	A69	B69	Bi26		
Ri27	A70	B70	Ri28		

Official website: www.linsn.com

Add: Floor 15&16, Jiajahao Business Building, No. 10168, Shennan Blvd,
Nanshan District, Shenzhen

Tel: +86-0755-33985098

	Gi27	A71	B71	Gi28	
	Bi27	A72	B72	Bi28	
	Reserved	A73	B73	Reserved	
	Reserved	A74	B74	Reserved	
	Reserved	A75	B75	Reserved	
	Reserved	A76	B76	Reserved	
	Reserved	A77	B77	Reserved	
	Reserved	A78	B78	Reserved	
	GND	A79	B79	GND	

FPGA other signal	SPI_CLKi	A80	B80	RXD1i	
	SPI_CSi1	A81	B81	RXD2i	
	SPI_MOSI1	A82	B82	RXD3i	
	SPI_MISOi	A83	B83	TXD1i	
	SDIN	A84	B84	TXD2i	
	SCLK	A85	B85	TXD3i	
	LRCK	A86	B86	Reserved	
	MCLK	A87	B87	Reserved	
	MCU2_RXD2	A88	B88	Reserved	
	MCU2_TXD2	A89	B89	Reserved	
	Reserved	A90	B90	Reserved	
MCU signal module	SMOKE	A91	B91		
	EXT_ADC1	A92	B92		
	EXT_ADC2	A93	B93		
	EXT_ADC3	A94	B94	LCD_SDA	LCD panel control signal
	EXT_ADC4	A95	B95	LCD_SCL	
	TEMP	A96	B96	LCD_A0	
	HUM	A97	B97	LCD_CSB	
	FAN	A98	B98	LCD_SDA2	
	MCU_RXD	A99	B99	LCD_RED	
	MCU_TXD	A100	B100	GND	

Official website: www.linsn.com

Add: Floor 15&16, Jiayahao Business Building, No. 10168, Shennan Blvd,
Nanshan District, Shenzhen

Tel: +86-0755-33985098

5. Working Conditions

	Normal	Minimum value	Maximum value	Unit
Rated Power	4	3.3	4.8	W
Rated voltage	5	4.5	5.5	V
Rated current	0.8	0.73	0.87	A
Working temperature		-20	70	°C
Working humidity		0	95	%

END

Official website: www.linsn.com

Add: Floor 15&16, Jiajiahao Business Building, No. 10168, Shennan Blvd,
Nanshan District, Shenzhen

Tel: +86-0755-33985098