

Mini903M

Version 2.2

Jan 2018

1. Features

Mini903M is a high-end and full-featured ultra-small size mini-receiver card. Compared with traditional receiver card, Mini903M uses high-density BTB connector. It is more flexible and it adapts to a variety of electronic circuit structure, achieving a card suitable for all applications, which will considerably reduce the types of purchasing receiver card.

The system, specific circuits and program design of Mini903M, can effectively reduce the electromagnetic radiation and effectively help products easily pass through the EMC test. Specific features are as follows:

1. It has all functions of 8th and 9th generation receiver cards and it is completely compatible with them;
2. Single card can support 32- group RGB data output mode;
3. Supports 64-group serial data output mode;
4. Realize high refresh and high gray level effect;

Official website: www.linsn.com

Add: Floor 15&16, Jiajiahao Business Building, No. 10168, Shennan Blvd,

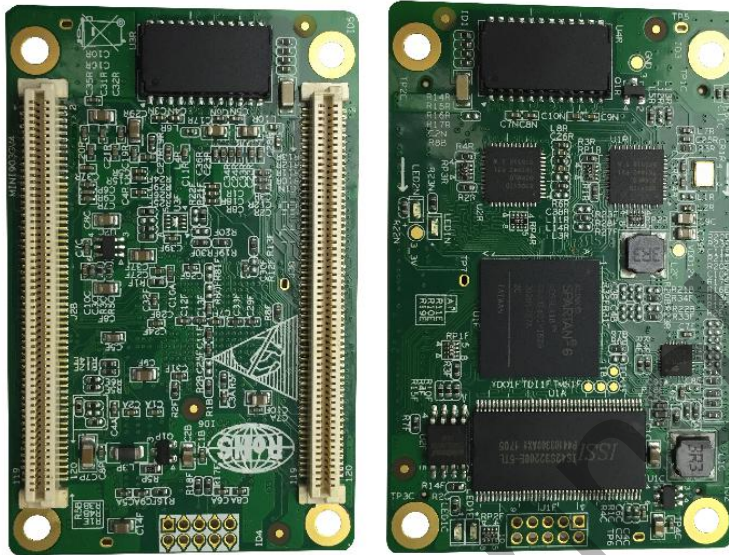
Nanshan District, Shenzhen

Tel: +86-0755-33985098



5. Supports general driver IC and PWM IC;
6. Supports any type of scan within 32 scan, and supports 595 and other serial decoding scan;
7. Supports brightness and color pixel-by-pixel calibration;
8. Maximum supports 512X512 pixels;
9. Supports 12-bit HDMI colors input (required the 9th generation sending card);
10. Use 18-bit signal processor, maximum supporting 18-bit (260,000) gray (each of red, green and blue);
11. Supports single-card color space conversion;
12. Supports configuration file read back;
13. Supports network cable BER test;
14. Supports hot backup with dual receiver cards, dual power supplier, etc;
15. RoHS compliant;
16. CE-EMC compliant.

2. Appearance Introduction



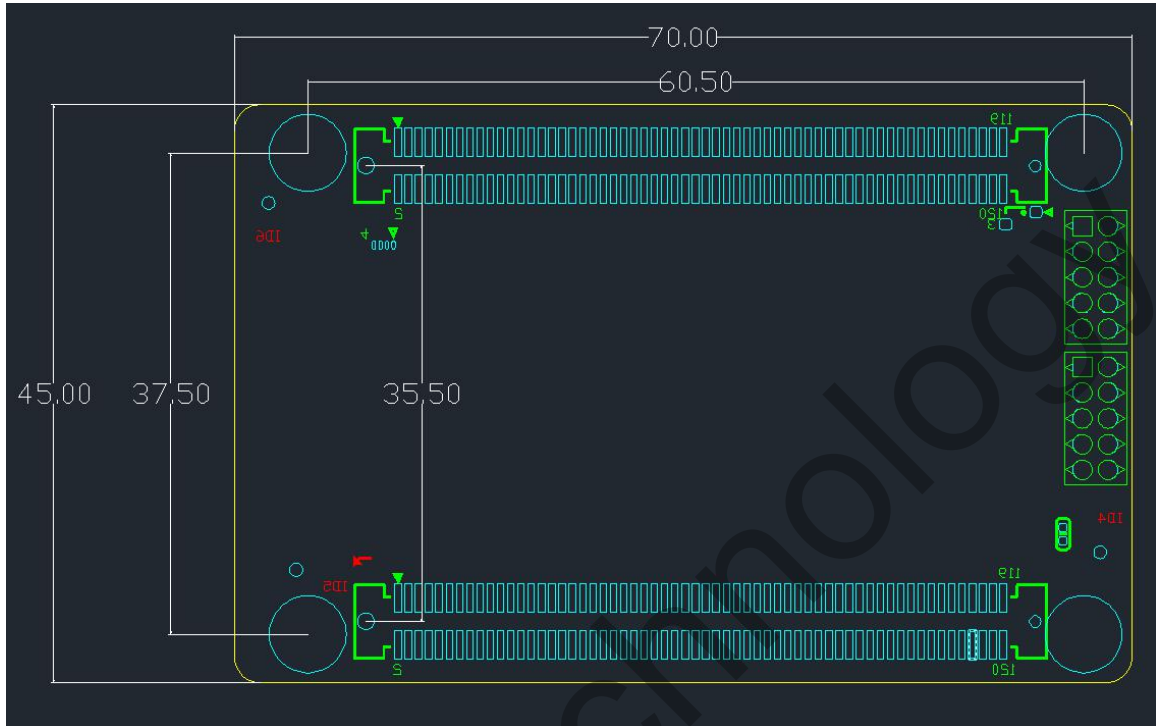
Picture 1 Mini903M Picture

Official website: www.linsn.com

Add: Floor 15&16, Jiajiahao Business Building, No. 10168, Shennan Blvd,
Nanshan District, Shenzhen

Tel: +86-0755-33985098

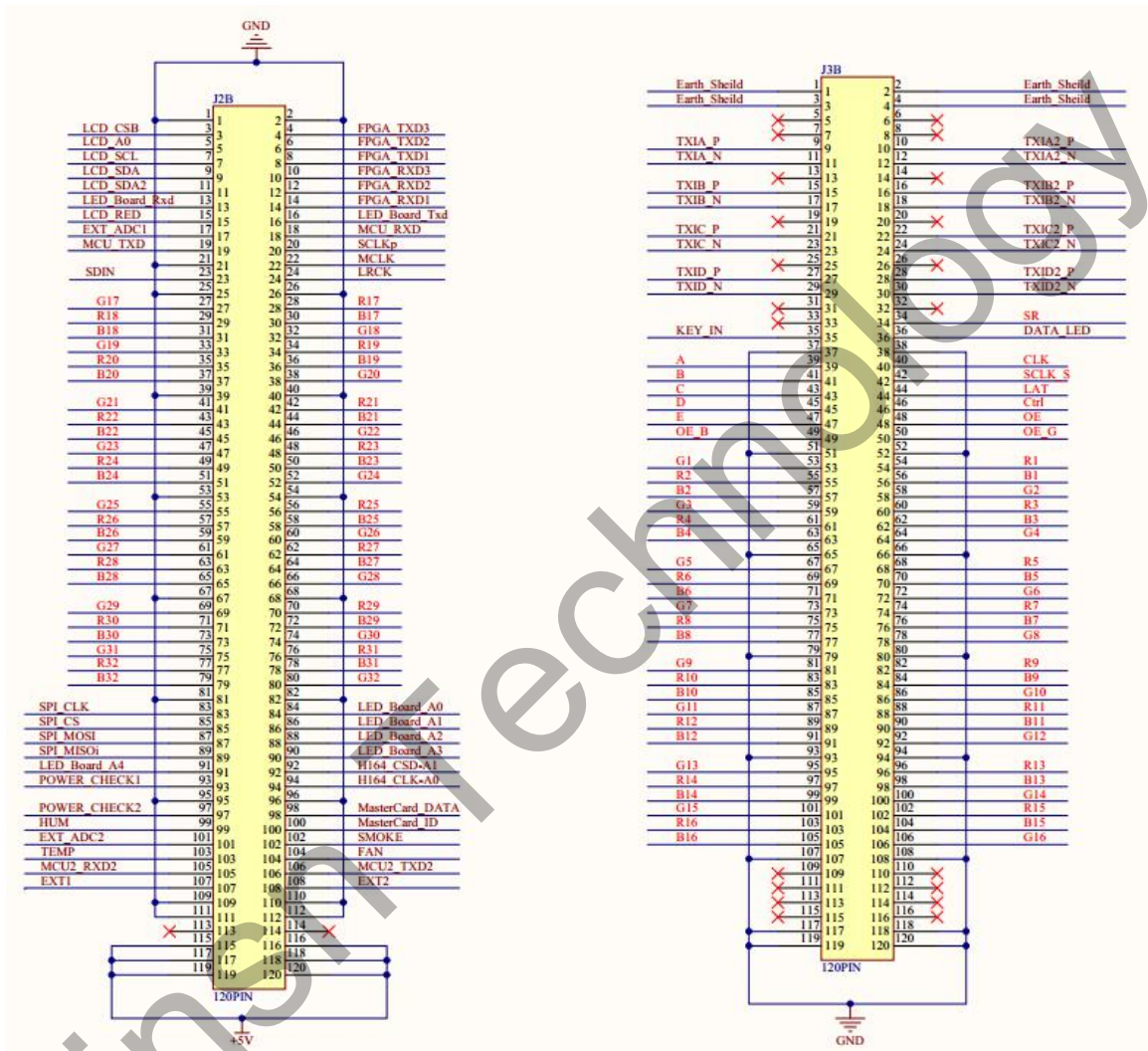
3. Dimensions



Picture 2 Mini903M Hole dimension drawings (mm)

Linsn Technology

4. Pin Description



Picture3 high-density BTB connector

Official website: www.linsn.com

Add: Floor 15&16, Jiajiahao Business Building, No. 10168, Shennan Blvd,

Nanshan District, Shenzhen

Tel: +86-0755-33985098

Definition of the 32-group parallel RGB data output mode

Pinout for Connector1

| | | | | |
|--|------|----|----|-----|
| | GND | 1 | 2 | GND |
| | NC | 3 | 4 | NC |
| | NC | 5 | 6 | NC |
| | NC | 7 | 8 | NC |
| | NC | 9 | 10 | NC |
| | NC | 11 | 12 | NC |
| | NC | 13 | 14 | NC |
| | NC | 15 | 16 | NC |
| | NC | 17 | 18 | NC |
| | NC | 19 | 20 | NC |
| | GND | 21 | 22 | NC |
| | SDIN | 23 | 24 | NC |
| | GND | 25 | 26 | GND |
| | G17 | 27 | 28 | R17 |
| | R18 | 29 | 30 | B17 |
| | B18 | 31 | 32 | G18 |
| | G19 | 33 | 34 | R19 |
| | R20 | 35 | 36 | B19 |
| | B20 | 37 | 38 | G20 |
| | GND | 39 | 40 | GND |
| | G21 | 41 | 42 | R21 |
| | R22 | 43 | 44 | B21 |
| | B22 | 45 | 46 | G22 |
| | G23 | 47 | 48 | R23 |
| | R24 | 49 | 50 | B23 |
| | B24 | 51 | 52 | G24 |
| | GND | 53 | 54 | GND |
| | G25 | 55 | 56 | R25 |
| | R26 | 57 | 58 | B25 |
| | B26 | 59 | 60 | G26 |

Official website: www.linsn.com

Add: Floor 15&16, Jiajahao Business Building, No. 10168, Shennan Blvd,

Nanshan District, Shenzhen

Tel: +86-0755-33985098

| | | | | | |
|--|-----|-----|-----|-----|--|
| | G27 | 61 | 62 | R27 | |
| | R28 | 63 | 64 | B27 | |
| | B28 | 65 | 66 | G28 | |
| | GND | 67 | 68 | GND | |
| | G29 | 69 | 70 | R29 | |
| | R30 | 71 | 72 | B29 | |
| | B30 | 73 | 74 | G30 | |
| | G31 | 75 | 76 | R31 | |
| | R32 | 77 | 78 | B31 | |
| | B32 | 79 | 80 | G32 | |
| | GND | 81 | 82 | GND | |
| | NC | 83 | 84 | NC | |
| | NC | 85 | 86 | NC | |
| | NC | 87 | 88 | NC | |
| | NC | 89 | 90 | NC | |
| | NC | 91 | 92 | NC | |
| | NC | 93 | 94 | NC | |
| | GND | 95 | 96 | GND | |
| | NC | 97 | 98 | NC | |
| | NC | 99 | 100 | NC | |
| | NC | 101 | 102 | NC | |
| | NC | 103 | 104 | NC | |
| | NC | 105 | 106 | NC | |
| | NC | 107 | 108 | NC | |
| | GND | 109 | 110 | GND | |
| | GND | 111 | 112 | GND | |
| | NC | 113 | 114 | NC | |
| | VCC | 115 | 116 | VCC | |
| | VCC | 117 | 118 | VCC | |
| | VCC | 119 | 120 | VCC | |

Official website: www.linsn.com

Add: Floor 15&16, Jiajiahao Business Building, No. 10168, Shennan Blvd,

Nanshan District, Shenzhen

Tel: +86-0755-33985098

Pinout for connector2:

| | | | | | |
|----------------------------|--------|----|----|-----------|----------------------------|
| | NC | 1 | 2 | NC | |
| | NC | 3 | 4 | NC | |
| | NC | 5 | 6 | NC | |
| | NC | 7 | 8 | NC | |
| Gigabit Network port | TXIA_P | 9 | 10 | TXIA2_P | Gigabit Network port |
| | TXIA_N | 11 | 12 | TXIA2_N | |
| | NC | 13 | 14 | NC | |
| | TXIB_P | 15 | 16 | TXIB2_P | |
| | TXIB_N | 17 | 18 | TXIB2_N | |
| | NC | 19 | 20 | NC | |
| | TXIC_P | 21 | 22 | TXIC2_P | |
| | TXIC_N | 23 | 24 | TXIC2_N | |
| | NC | 25 | 26 | NC | |
| | TXID_P | 27 | 28 | TXID2_P | |
| | TXID_N | 29 | 30 | TXID2_N | |
| | NC | 31 | 32 | NC | |
| | NC | 33 | 34 | SR | |
| | KEY_IN | 35 | 36 | DATA_LED- | |
| | GND | 37 | 38 | GND | |
| | A | 39 | 40 | CLK | |
| | B | 41 | 42 | SCLK_S | |
| | C | 43 | 44 | LAT | |
| | D | 45 | 46 | Ctrl | |
| | E | 47 | 48 | OE | |
| | OE_B | 49 | 50 | OE_G | |
| | GND | 51 | 52 | GND | |
| | G1 | 53 | 54 | R1 | |
| | R2 | 55 | 56 | B1 | |
| | B2 | 57 | 58 | G2 | |
| | G3 | 59 | 60 | R3 | |
| | R4 | 61 | 62 | B3 | |
| | B4 | 63 | 64 | G4 | |
| | GND | 65 | 66 | GND | |
| | G5 | 67 | 68 | R5 | |

Official website: www.linsn.com

Add: Floor 15&16, Jiajiahao Business Building, No. 10168, Shennan Blvd,

Nanshan District, Shenzhen

Tel: +86-0755-33985098

| | | | |
|-----|-----|-----|-----|
| R6 | 69 | 70 | B5 |
| B6 | 71 | 72 | G6 |
| G7 | 73 | 74 | R7 |
| R8 | 75 | 76 | B7 |
| B8 | 77 | 78 | G8 |
| GND | 79 | 80 | GND |
| G9 | 81 | 82 | R9 |
| R10 | 83 | 84 | B9 |
| B10 | 85 | 86 | G10 |
| G11 | 87 | 88 | R11 |
| R12 | 89 | 90 | B11 |
| B12 | 91 | 92 | G12 |
| GND | 93 | 94 | GND |
| G13 | 95 | 96 | R13 |
| R14 | 97 | 98 | B13 |
| B14 | 99 | 100 | G14 |
| G15 | 101 | 102 | R15 |
| R16 | 103 | 104 | B15 |
| B16 | 105 | 106 | G16 |
| GND | 107 | 108 | GND |
| NC | 109 | 110 | NC |
| NC | 111 | 112 | NC |
| NC | 113 | 114 | NC |
| NC | 115 | 116 | NC |
| GND | 117 | 118 | GND |
| GND | 119 | 120 | GND |

Definition of the 64-group serial data output mode

Pinout for connector1

| | | | |
|-----|---|---|-----|
| GND | 1 | 2 | GND |
| NC | 3 | 4 | NC |
| NC | 5 | 6 | NC |
| NC | 7 | 8 | NC |



| | | | | | |
|--|--------|----|----|--------|--|
| | NC | 9 | 10 | NC | |
| | NC | 11 | 12 | NC | |
| | NC | 13 | 14 | NC | |
| | NC | 15 | 16 | NC | |
| | NC | 17 | 18 | NC | |
| | NC | 19 | 20 | NC | |
| | GND | 21 | 22 | NC | |
| | SDIN | 23 | 24 | NC | |
| | GND | 25 | 26 | GND | |
| | Data50 | 27 | 28 | Data49 | |
| | Data52 | 29 | 30 | Data51 | |
| | Data54 | 31 | 32 | Data53 | |
| | Data56 | 33 | 34 | Data55 | |
| | Data58 | 35 | 36 | Data57 | |
| | Data60 | 37 | 38 | Data59 | |
| | GND | 39 | 40 | GND | |
| | Data62 | 41 | 42 | Data61 | |
| | Data64 | 43 | 44 | Data63 | |
| | NC | 45 | 46 | NC | |
| | NC | 47 | 48 | NC | |
| | NC | 49 | 50 | NC | |
| | NC | 51 | 52 | NC | |
| | GND | 53 | 54 | GND | |
| | NC | 55 | 56 | NC | |
| | NC | 57 | 58 | NC | |
| | NC | 59 | 60 | NC | |
| | NC | 61 | 62 | NC | |
| | NC | 63 | 64 | NC | |
| | NC | 65 | 66 | NC | |
| | GND | 67 | 68 | GND | |
| | NC | 69 | 70 | NC | |
| | NC | 71 | 72 | NC | |
| | NC | 73 | 74 | NC | |
| | NC | 75 | 76 | NC | |
| | NC | 77 | 78 | NC | |
| | NC | 79 | 80 | NC | |
| | GND | 81 | 82 | GND | |
| | NC | 83 | 84 | NC | |

Official website: www.linsn.com

Add: Floor 15&16, Jiajahao Business Building, No. 10168, Shennan Blvd,

Nanshan District, Shenzhen

Tel: +86-0755-33985098

| | | | | | |
|--|-----|-----|-----|-----|--|
| | NC | 85 | 86 | NC | |
| | NC | 87 | 88 | NC | |
| | NC | 89 | 90 | NC | |
| | NC | 91 | 92 | NC | |
| | NC | 93 | 94 | NC | |
| | GND | 95 | 96 | GND | |
| | NC | 97 | 98 | NC | |
| | NC | 99 | 100 | NC | |
| | NC | 101 | 102 | NC | |
| | NC | 103 | 104 | NC | |
| | NC | 105 | 106 | NC | |
| | NC | 107 | 108 | NC | |
| | GND | 109 | 110 | GND | |
| | GND | 111 | 112 | GND | |
| | NC | 113 | 114 | NC | |
| | VCC | 115 | 116 | VCC | |
| | VCC | 117 | 118 | VCC | |
| | VCC | 119 | 120 | VCC | |

Pinout for connector2:

| | | | | | |
|----------------------------|--------|----|----|---------|----------------------------|
| | NC | 1 | 2 | NC | |
| | NC | 3 | 4 | NC | |
| | NC | 5 | 6 | NC | |
| | NC | 7 | 8 | NC | |
| Gigabit Network port | TXIA_P | 9 | 10 | TXIA2_P | Gigabit Network port |
| | TXIA_N | 11 | 12 | TXIA2_N | |
| | NC | 13 | 14 | NC | |
| | TXIB_P | 15 | 16 | TXIB2_P | |
| | TXIB_N | 17 | 18 | TXIB2_N | |
| | NC | 19 | 20 | NC | |
| | TXIC_P | 21 | 22 | TXIC2_P | |
| | TXIC_N | 23 | 24 | TXIC2_N | |
| | NC | 25 | 26 | NC | |
| | TXID_P | 27 | 28 | TXID2_P | |

Official website: www.linsn.com

Add: Floor 15&16, Jiajahao Business Building, No. 10168, Shennan Blvd,

Nanshan District, Shenzhen

Tel: +86-0755-33985098

| TXID_N | 29 | 30 | TXID2_N |
|--------|-----|-----|-----------|
| NC | 31 | 32 | NC |
| NC | 33 | 34 | NC |
| KEY_IN | 35 | 36 | DATA_LED- |
| GND | 37 | 38 | GND |
| A | 39 | 40 | CLK |
| B | 41 | 42 | SCLK_S |
| C | 43 | 44 | LAT |
| D | 45 | 46 | SR |
| E | 47 | 48 | OE |
| NC | 49 | 50 | NC |
| GND | 51 | 52 | GND |
| Data2 | 53 | 54 | Data1 |
| Data4 | 55 | 56 | Data3 |
| Data6 | 57 | 58 | Data5 |
| Data8 | 59 | 60 | Data7 |
| Data10 | 61 | 62 | Data9 |
| Data12 | 63 | 64 | Data11 |
| GND | 65 | 66 | GND |
| Data14 | 67 | 68 | Data13 |
| Data16 | 69 | 70 | Data15 |
| Data18 | 71 | 72 | Data17 |
| Data20 | 73 | 74 | Data19 |
| Data22 | 75 | 76 | Data21 |
| Data24 | 77 | 78 | Data23 |
| GND | 79 | 80 | GND |
| Data26 | 81 | 82 | Data25 |
| Data28 | 83 | 84 | Data27 |
| Data30 | 85 | 86 | Data29 |
| Data32 | 87 | 88 | Data31 |
| Data34 | 89 | 90 | Data33 |
| Data36 | 91 | 92 | Data35 |
| GND | 93 | 94 | GND |
| Data38 | 95 | 96 | Data37 |
| Data40 | 97 | 98 | Data39 |
| Data42 | 99 | 100 | Data41 |
| Data44 | 101 | 102 | Data43 |
| Data46 | 103 | 104 | Data45 |

Official website: www.linsn.com

Add: Floor 15&16, Jiajiahao Business Building, No. 10168, Shennan Blvd,

Nanshan District, Shenzhen

Tel: +86-0755-33985098

| | | | | | |
|--|--------|-----|-----|--------|--|
| | Data48 | 105 | 106 | Data47 | |
| | GND | 107 | 108 | GND | |
| | NC | 109 | 110 | NC | |
| | NC | 111 | 112 | NC | |
| | NC | 113 | 114 | NC | |
| | NC | 115 | 116 | NC | |
| | GND | 117 | 118 | GND | |
| | GND | 119 | 120 | GND | |

5. Working Conditions

| | Normal | Minimum value | Maximum value | Unit |
|---------------------|--------|---------------|---------------|------|
| Rated Power | 4 | 3.3 | 4.8 | W |
| Rated voltage | 5 | 4.5 | 5.5 | V |
| Rated current | 0.8 | 0.73 | 0.87 | A |
| Working temperature | | -20 | 70 | °C |
| Working humidity | | 0 | 95 | % |

END