

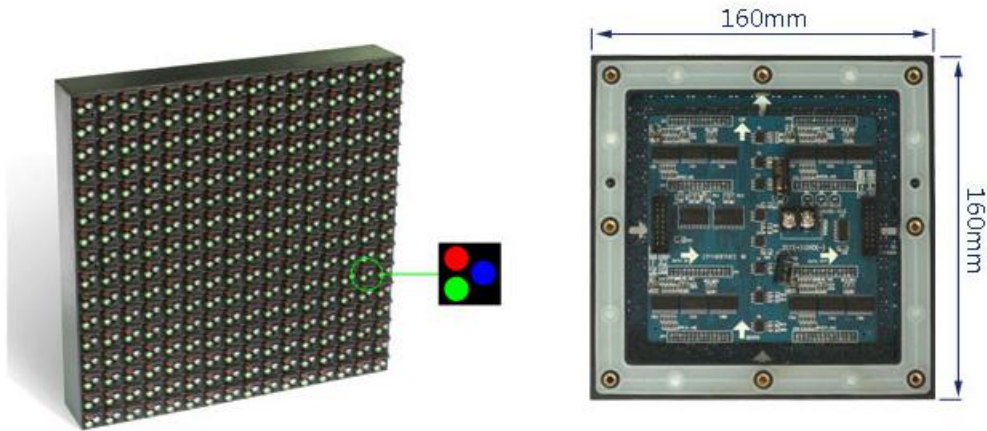


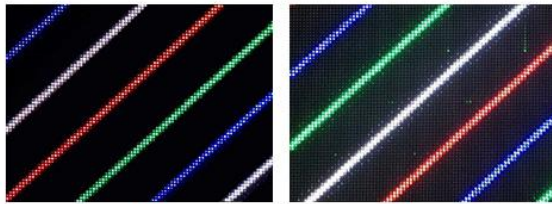
**PH10mm DIP346 1R1G1B Outdoor Full Color LED Module Specifications:**

<b>Model</b>		<b>LINSN-P10-OF-16x16</b>				
<b>1.LED</b>						
<b>Diagram</b>	<b>Model</b>	<b>Color</b>	<b>Intensity</b>	<b>View Angle</b>	<b>Wavelength</b>	<b>Test Cond.</b>
	1R1G1B		750mcd	140/140	620nm	25°C,20mA
			2100mcd	140/140	520nm	25°C,20mA
			530mcd	140/140	470nm	25°C,20mA
<p><b>DIP346 RGB with High Brightness and Stable Quality,Lifetime is 5-10 Years.Normally used for the bad weather conditions such as desert or cold places.</b></p> <div style="text-align: center;">  <p><b>Real Pixel</b></p> </div>						

**2.LED Module**



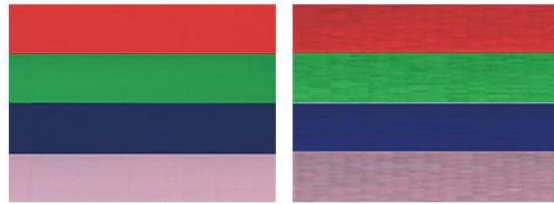
De-Ghosting(Lower Ghosting)



↑  
Unit LED

↑  
Common

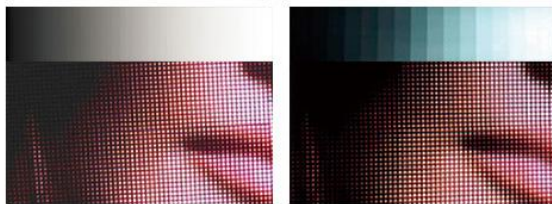
Color Uniformity



↑  
Unit LED

↑  
Common

Grey Level



↑  
Unit LED

↑  
Common

Refresh Rate



↑  
Unit LED

↑  
Common

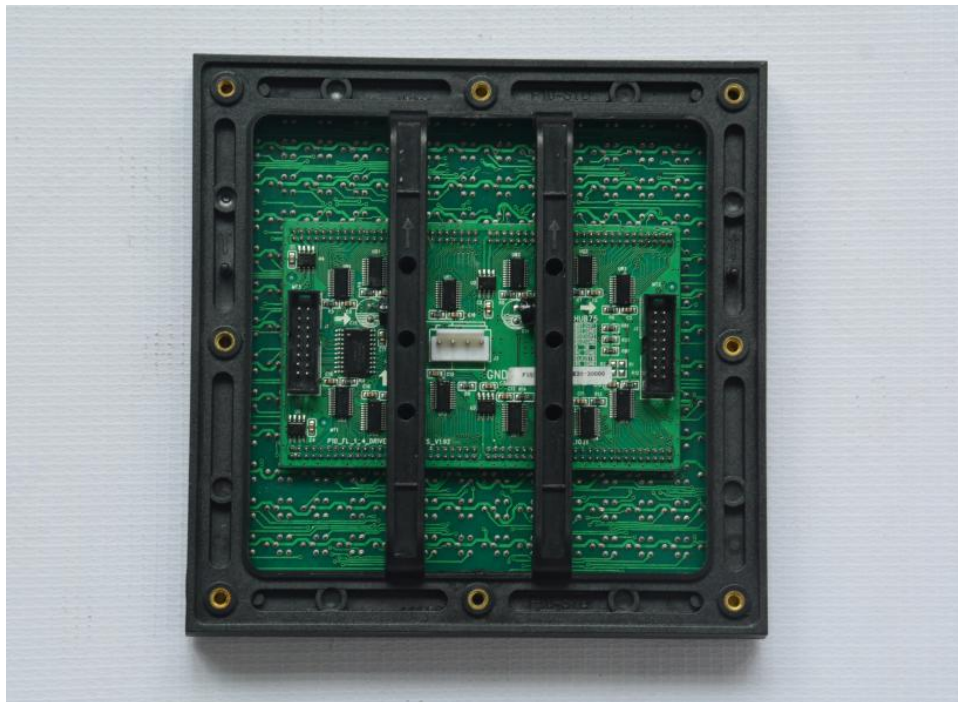
Resolution	16(H)×16(V)
Pitch	10mm
Density	10000 pixels/m <sup>2</sup>
LED Arrangement	DIP 1R1G1B
Driver Mode	Dynamic 1/4 Duty constant current
Size	160mm×160mm
Mask	Pure Black mask-high contrast screen

<b>3.Electricity Parameter</b>	
<b>Optical Ratings</b>	
Brightness	7000-10000 cd/m <sup>2</sup>
View Angle	110 degree ( horizontal) 70degree(vertical)
View Distance	10m-100m
Gray Scale	14bits input, correction with 16bits
Display Color	16.7M
Brightness Adjustment	0-100 levels
<b>Power Supply</b>	
Operation Power	AC100-240V 50-60HZ Switch-able
Maxim Power Consumption	880 W/m <sup>2</sup>
Average Power Consumption	350 W/m <sup>2</sup>
<b>Control System</b>	
Correction Scale Level	16bits
Frame Update Frequency	60-75Hz
Screen Refresh Frequency	960-1920Hz
Gamma Correction	-5.0—5.0
Support Input	Composite Video, S-Video, DVI, HDMI., SDI, HD_SDI
Control Distance	Ethernet cable 100m, optical fiber 5km
Support VGA Mode	800×600,1024×768,1280×1024,1600×1200
Color Temperature	5000-9300 adjustable
Brightness Correction	dot by dot, module by module, cabinet by cabinet
<b>Reliability</b>	
Operating Temp.	-20-60 Celsius degree
Operating Humidity	10-95% RH
Operating Life	100,000 hours
MTBF	5000 hours
Continuous Working Time	≥48 hours
Protection Level	IP65 Waterproof Front
Out of Control Pixel Rate	0.01%

**P10 LED Panel Pictures:**



**P10 RGB LED Module Face View**



**P10 RGB LED Module Back View**